

Installation Instructions for Bullet Light Mounts:

READ COMPLETELY BEFORE BEGINNING INSTALLATION

Page 1 of 1

- 1) The light mounts are installed on the lower triple tree, and under the headlight shell.
- 2) It is easiest to have the bullet lights already mounted to the brackets.
- 3) Remove the headlight shell from the bike.
- 4) Remove the stock turn signals and the chrome cast metal mounting base.
- 5) Cut the Suzuki headlight/signal mount bracket as shown in figure 1.
- 6) Install the bracket as shown in the pictures.
- 7) Re-Install the Headlight Shell, test your lights and turn signals and now go for a ride!

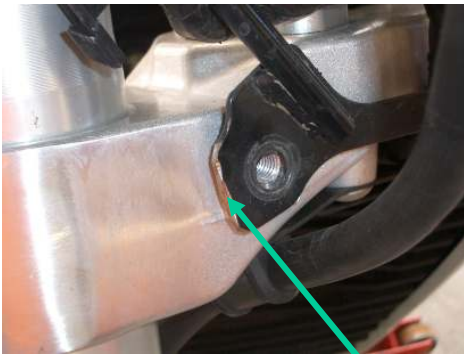


Fig 1. CUT



Dual Light Mount



Dual Light Mount



Single Light Mount